

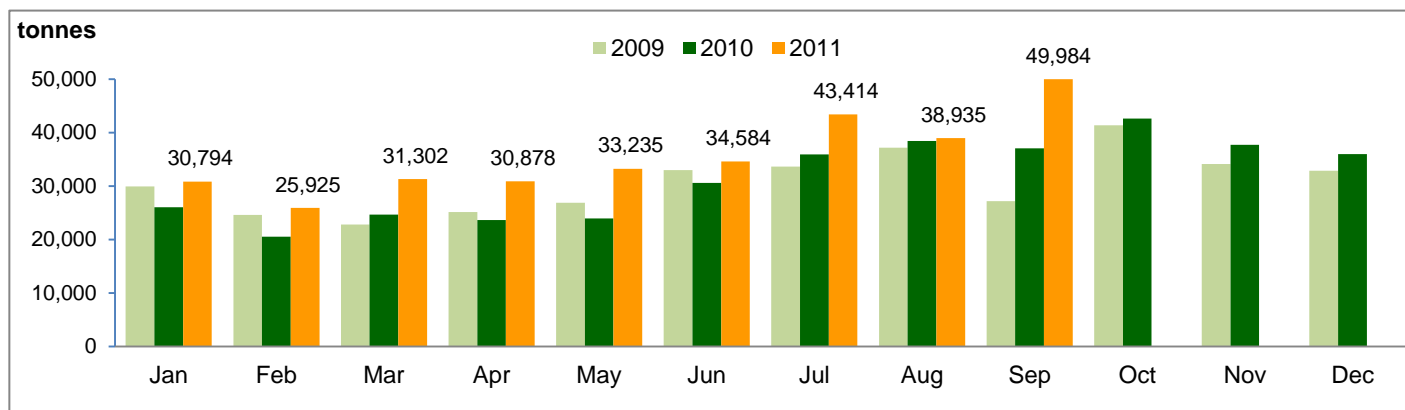


**Monthly Production Highlights – September 2011**

**Production and Yields**

		9M2011	9M2010	Change	Sept 2011	Sept 2010	Change
<b>Production</b>							
FFB Total	(tonnes)	1,342,949	1,100,304	22.1%	210,245	157,110	33.8%
Nucleus		1,222,249	1,005,322	21.6%	192,001	141,861	35.3%
Plasma		120,700	94,982	27.1%	18,244	15,249	19.6%
CPO	(tonnes)	319,051	260,634	22.4%	49,984	37,018	35.0%
PK	(tonnes)	73,067	58,713	24.4%	11,636	8,471	37.4%
<b>Efficiency</b>							
FFB Yield	(tonnes/ha)	15.7	14.0	↑	2.5	2.0	↑
CPO Yield	(tonnes/ha)	3.7	3.3	↑	0.6	0.5	↑
CPO Extraction Rate	(%)	23.5	23.5	-	23.7	23.2	↑
PK Extraction Rate	(%)	5.4	5.3	↑	5.5	5.3	↑

**CPO Production Trend**



	Jan	Feb	Mar	Apr	May	Jun	Jul	Aug	Sep	Oct	Nov	Dec
<b>2010</b>	26,004	20,503	24,625	23,634	23,941	30,587	35,925	38,398	37,018	42,630	37,705	35,953
<b>2009</b>	29,920	24,579	22,786	25,127	26,861	32,990	33,645	37,185	27,193	41,367	34,106	32,874

**Notes:**

Figures may not sum due to rounding

FFB: Fresh Fruit Bunches

CPO: Crude Palm Oil

PK: Palm Kernel

Nucleus: Plantations owned by the Group

Plasma: Plantations developed by the Group for the benefit of smallholders. The Group buys FFB from these plasma plantations at prices determined by the Indonesian government.

Yields: FFB Yield and CPO Yield are for the reported period and not annualised